

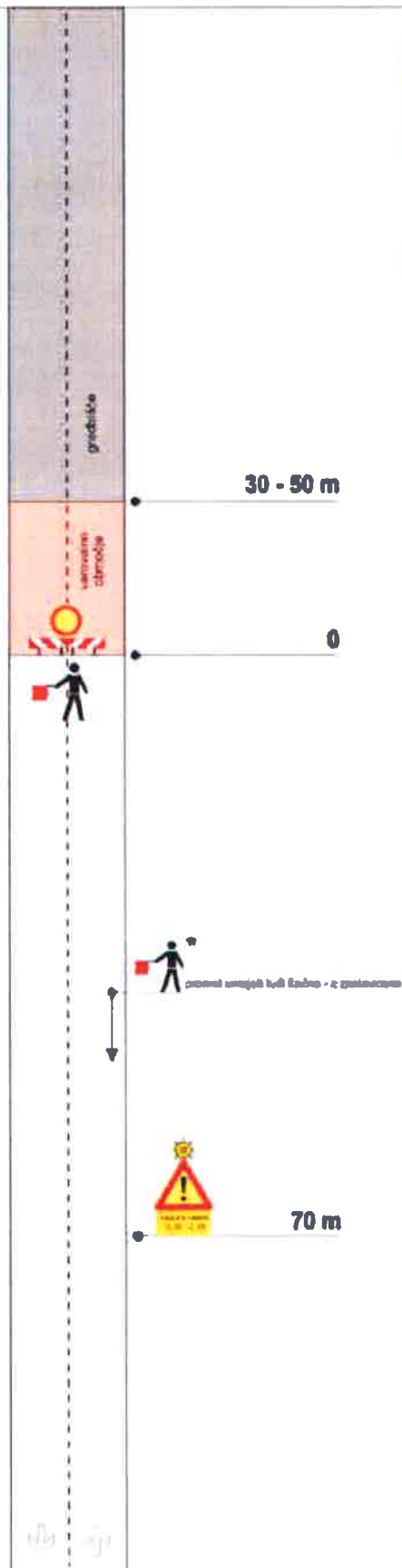


ZAPORA E-3

ceste v naselju za zavarovanje del, ki
zahtevajo popolno zaporo odseka brez
vzpostavitve obvoza

-  znaku doznata utripajoča luč premera 210 mm
-  po potrebi prometi umetni lučično z zastavkami
na razdalji 30 m pred koncem kolone stoječih
vozil



(mere v metrih)